

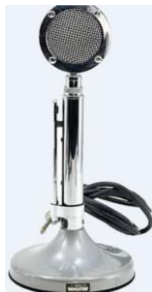
FOR SALE

COLLINS

FOR SALE

175-watt, All-Band, HF SSB-CW-RTTY Station

Package Deal ... Just \$995



D104 Mic

10/10 quality!
Amp in base

~~ \$100 firm ~~



312-B3 Speaker

Like New, Original Owner!

<https://www.universal-radio.com/catalog/hamhf/kwm2.html>

~~ \$150 firm ~~

KWM-2A Transceiver

Like New, Original Owner!

<https://www.universal-radio.com/catalog/hamhf/kwm2.html>

~~ \$800 firm ~~



516E-1 DC Power Supply

Operates from 12 VDC. Tested FB.

~~ \$300 firm ~~

Two 1-KW Amplifiers



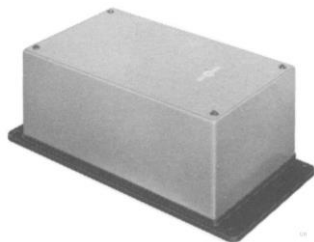
30L-1 Amplifiers

Some 'cosmetic' wear – Each requires new transformer & tubes

<https://www.universal-radio.com/catalog/amps/30L1.html>

~~ \$300 each ~~

The **Collins 30L-1** has 1000 watts PEP power input on SSB and 1000 watts average on CW on 80, 40, 20, 15 and 10 meters. Power requirements are 115/230 VAC 50-60 Hz, key closed 1200 watts AC, SSB no modulation 300 watts AC, SSB speech modulated 550 watts AC. Drive power is 70 to 100 watts for full power output. RF connection is [N type](#)



MP-1 DC Pwr Supply

<https://www.universal-radio.com/catalog/hamhf/mp1.html>

~~ \$200 firm ~~

PS-120 DC Pwr Supply & Cooling Fan for KWM-2A

Bracket mounts on back of KWM-2A

~~ \$100 firm ~~

Contact:

George Heron, N2APB

n2apb@verizon.net

"Pickup-only" in East TN – *No shipping!*

("Can Transfer" within 2-hr radius of Knoxville)